

# Programmes After Market Services

## NPE-4 Cellular Phones

### 4 - Service Software

**Table of Contents**

	<b>Page No.</b>
Service Software .....	3
Phoenix .....	3
Supported Operating Systems .....	3
Hardware requirements for using Phoenix .....	3
Introduction .....	3
Installing Phoenix .....	3
Login .....	4
Adding users .....	4
Products .....	5
Connections .....	5
Adding / editing connections .....	6
Connection tips .....	7
Profile .....	7
Saves .....	7
Does not save .....	8
Tips about profiles .....	9
FPS-8 .....	9
Introduction .....	9
FPS-8 software upgrade .....	10
Manual flashing .....	13
Menus .....	13
Menus left out .....	14

## Service Software

### Phoenix

Phoenix is the software tool for flashing, tuning and testing Nokia cellular phones.

It has been created for Win32 environment with COM technology and it replaces all existing applications such as WinTesla.

### Supported Operating Systems

Windows 95, 98, 2000 and NT 4.0 (SP4).

### Hardware requirements for using Phoenix

Minimum:

Processor 233 MHz, RAM memory 64 MB, disk space 50-100 MB.

Recommended for Windows 2000:

Processor 700 MHz, RAM memory 512 MB, disk space 50-100 MB.

### Introduction

This section briefly describes how to install the Phoenix software and includes some basic information on how to use the program. For more detailed information, please refer to Phoenix's **Help-files**. Each feature in Phoenix has its own Help function, which can be activated while running the program.

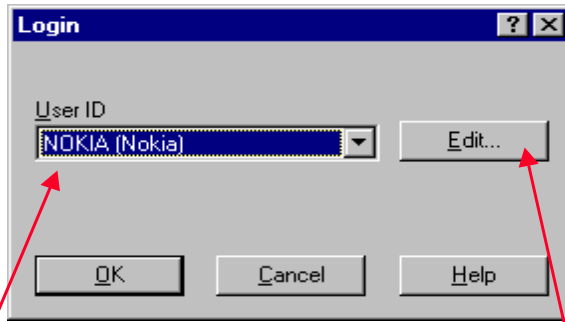
Press the *F1* key or the feature's Help-button to activate a Help-file.

### Installing Phoenix

- 1 Close all programs before installing Phoenix.
- 2 Remember to attach dongle before starting installation.
- 3 Read the release notes, it has useful information about the Phoenix version.
- 4 Since Phoenix is made of components you may install each Phoenix installation package on top of each other Setup will make sure that the new components are not replaced by old ones
- 5 Install Phoenix by executing the Phoenix installation package and follow the instructions on the screen.

*Note: Afterwards all components must be registered. This is done automatically and takes 5 to 10 min.*

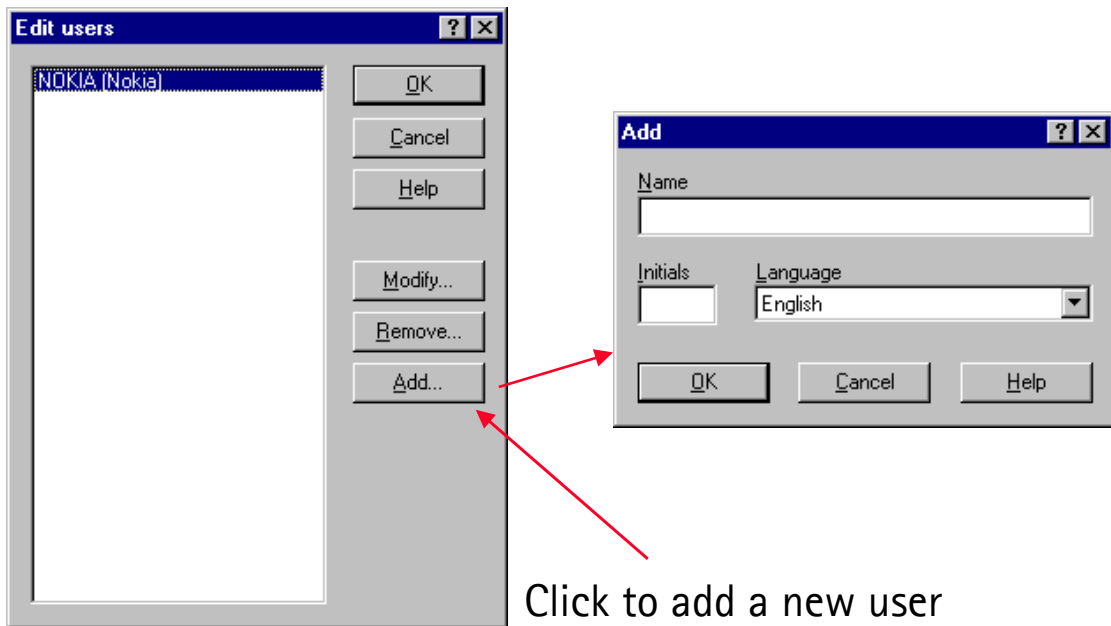
### Login



Select user name and press OK

Adding user

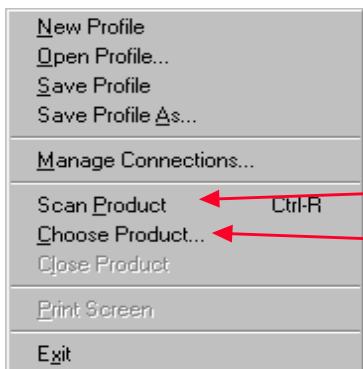
### Adding users



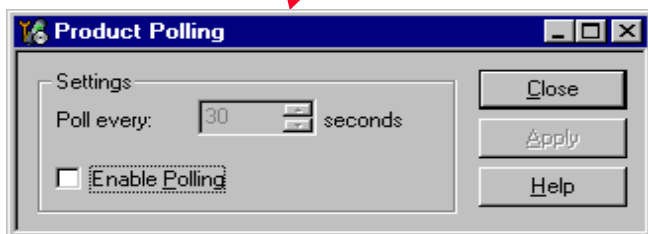
Click to add a new user

### Products

File menu:



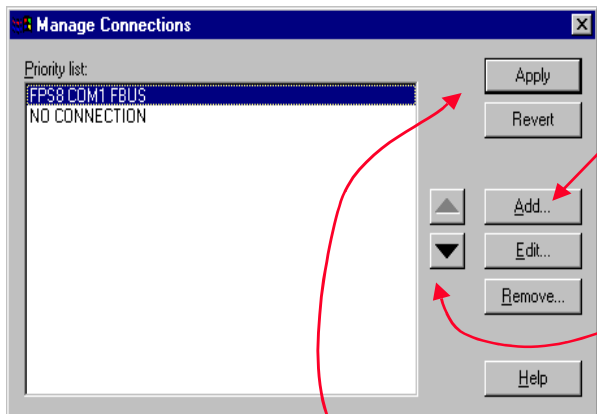
- When a product is selected, the menu changes (enabling the features for the product)
- You can either
  - Scan for product
  - Choose product
  - Poll for product (Tools -> Settings -> Product Polling)



### Connections

Connections is a way of describing how a product is connected to Phoenix, i.e. what protocol should be used.

File -> Manage Connections brings up this dialog:

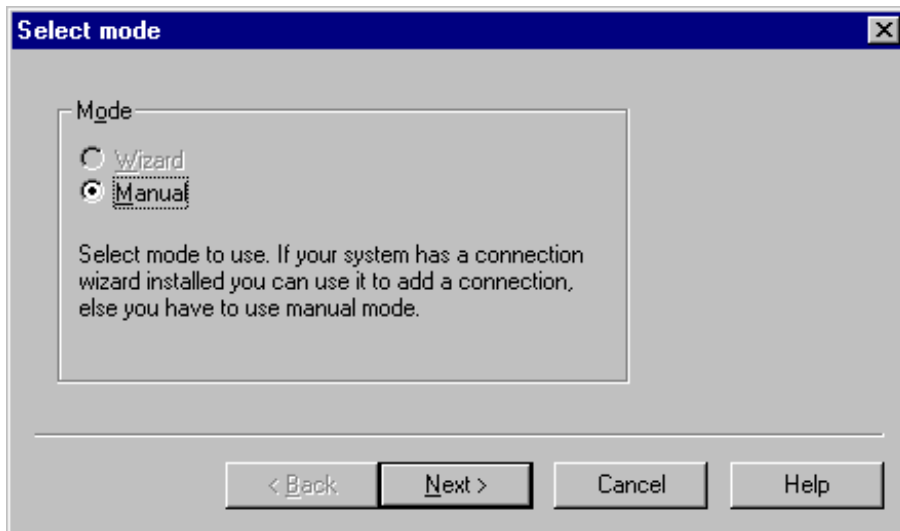


Add connections

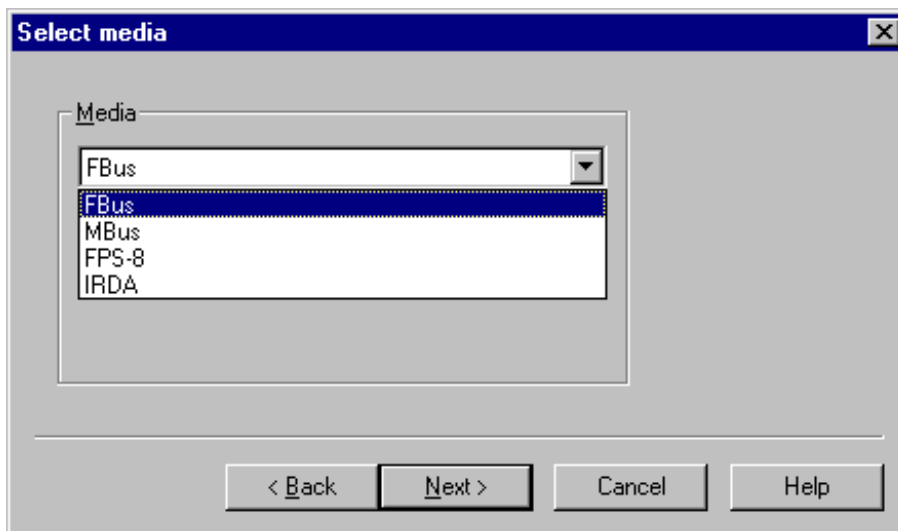
Use the arrow keys to bring the wanted connection to the top of the list

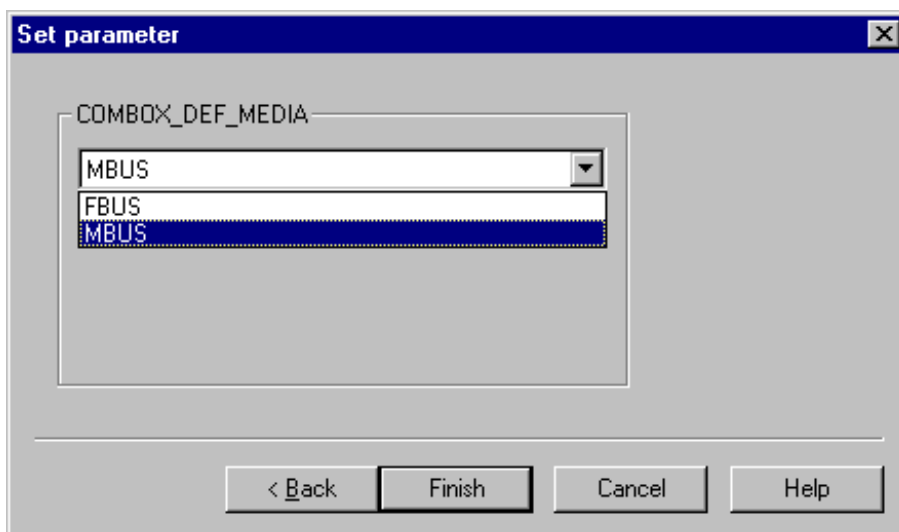
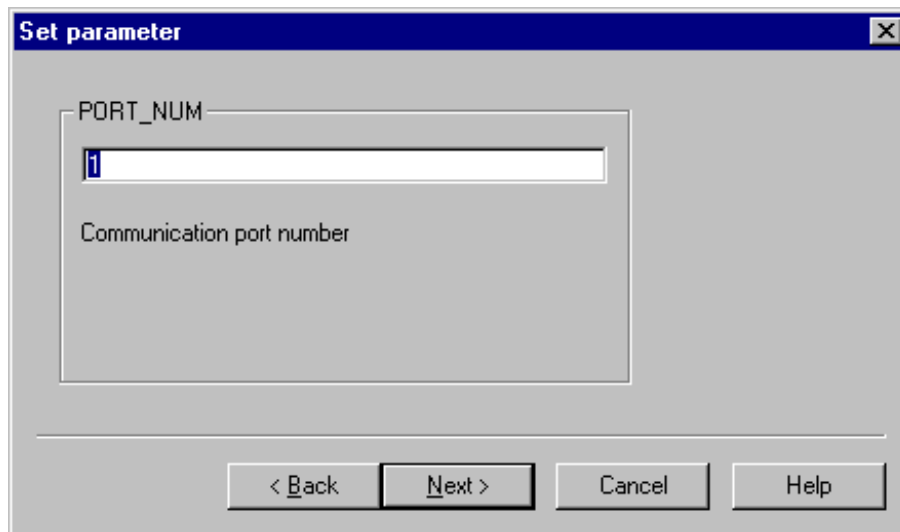
Remember to apply changes

## Adding/editing connections



FPS-8 used as example





### Connection tips

- Use FBUS.
- If FPS-8 is used, used FBUS as COMBOX\_DEF\_MEDIA.
- If a connection is lost (e.g. the FPS-8 box is changed), select File -> manage connections and press the "Apply" button.

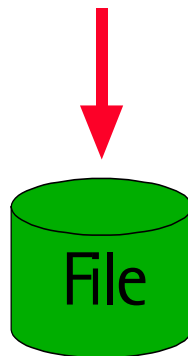
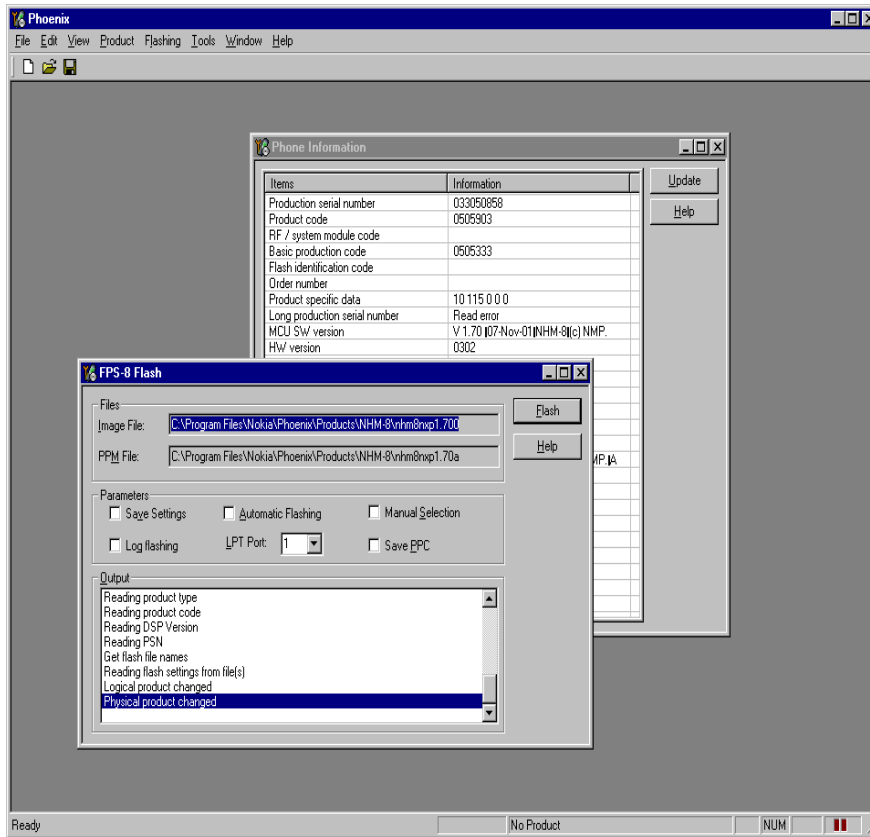
### Profiles

#### Saves

- All open windows
- The position of the windows
- The selected product

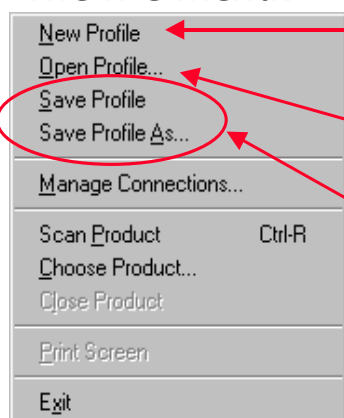
**Does not save**

- Open connection
- Values of e.g. phone information





The file menu:



Creates a new profile  
(closes all windows)

Opens a profile (select a filename)

Saves profiles in files

*Note: The last used profiles are also shown in the file menu.*

**Tips about profiles**

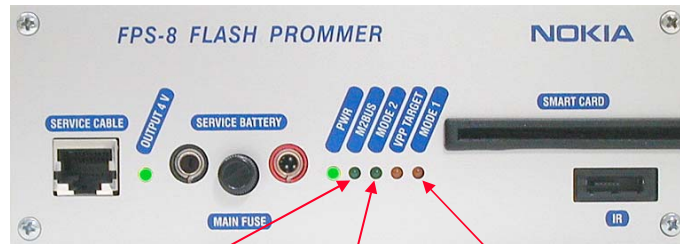
- Use profile for making standard setups of Phoenix.
- Profiles are saved in files. These files can be shared with other users.

**FPS-8**

**Introduction**

- Used for flashing and writing serial numbers.
- AKA prommer.
- The FPS-8C is a so called parallel version of FPS-8 (is able to flash 8 phones at a time).
- SW in the box:

SW type	Prommer mode when updating
FPGA	Service mode
Application	
Secondary boot	Normal mode
Algorithm	



On, if a phone is connected and the phone is turned off

On, if the FPS-8 is in service mode

Flashes slowly when erasing flash. Flashes quickly when programming flash

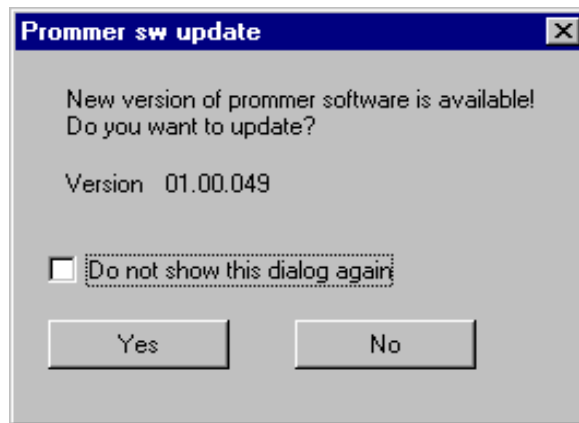
FPS\_8 front panel

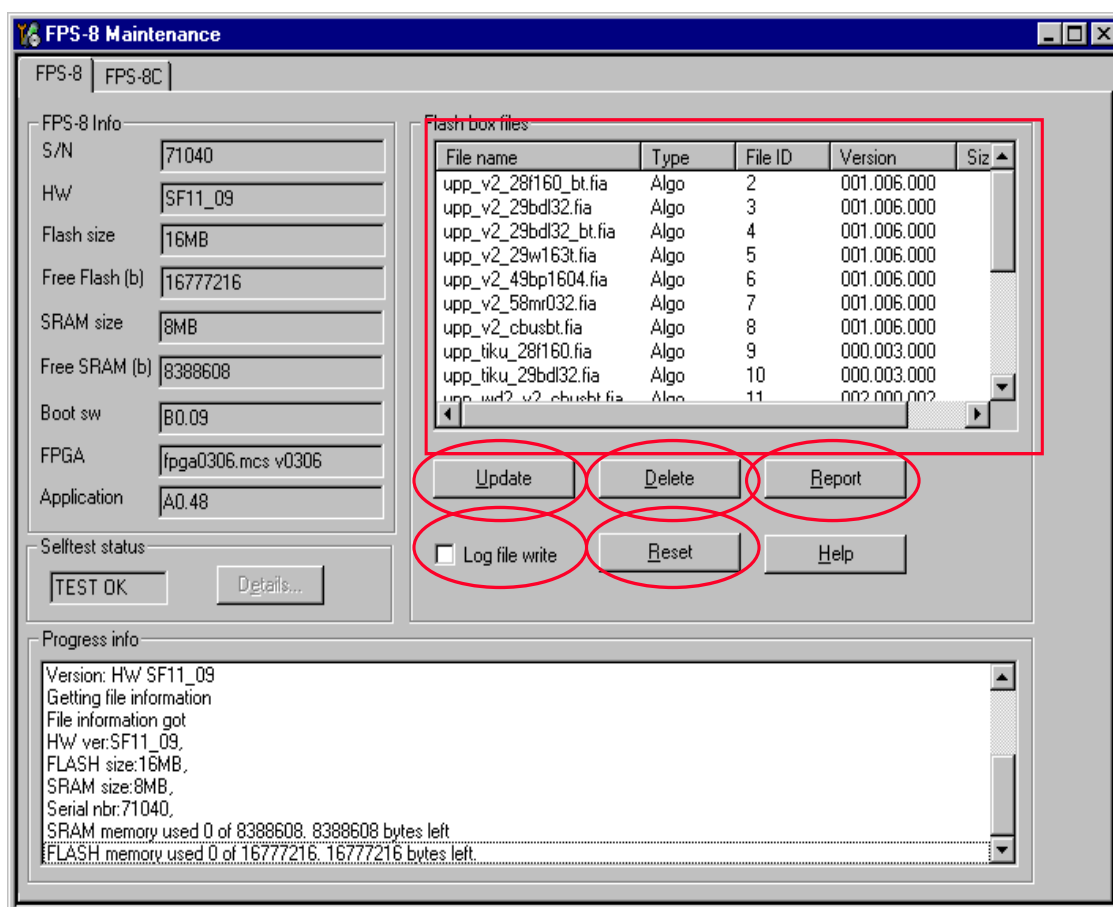
### FPS-8 software upgrade

SW upgrades for the FPS-8 comes in a single file installation package.

Install this package. It will install to the "Flash" subdirectory in the Phoenix directory.

When Flashing -> FPS-8 / FPS-8C maintenance is selected, this dialog is shown (if the FPS-8 connected has older SW):





**"Update"** button: Updates the SW in the FPS-8. Select the fps8upd.ini file in the "Flash" directory.

**"Delete"** button: Deletes the algorithm or secondary boot file selected in the list.

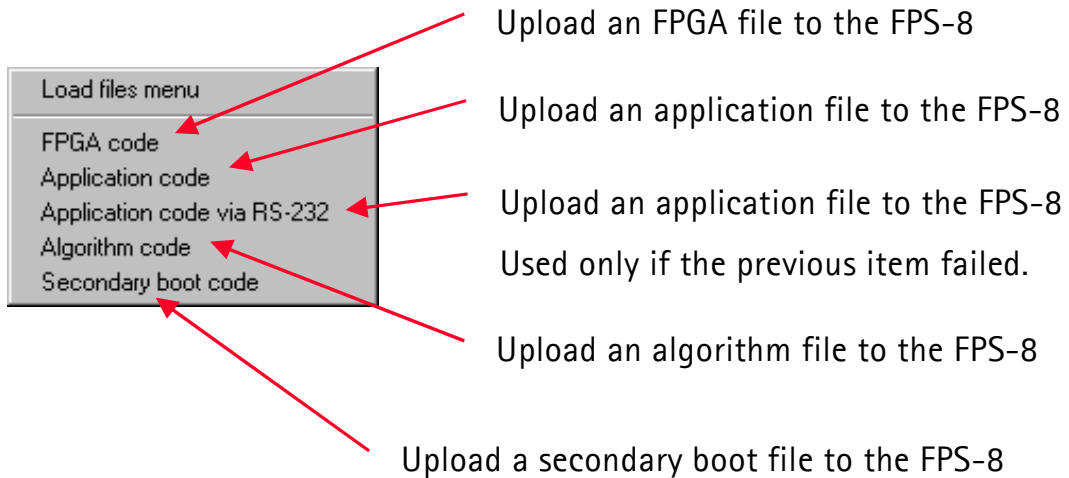
*Note: Only one file can be deleted at a time.*

**"Report"** button: Creates a file which describes the FPS-8 setup. Attach this file when reporting errors.

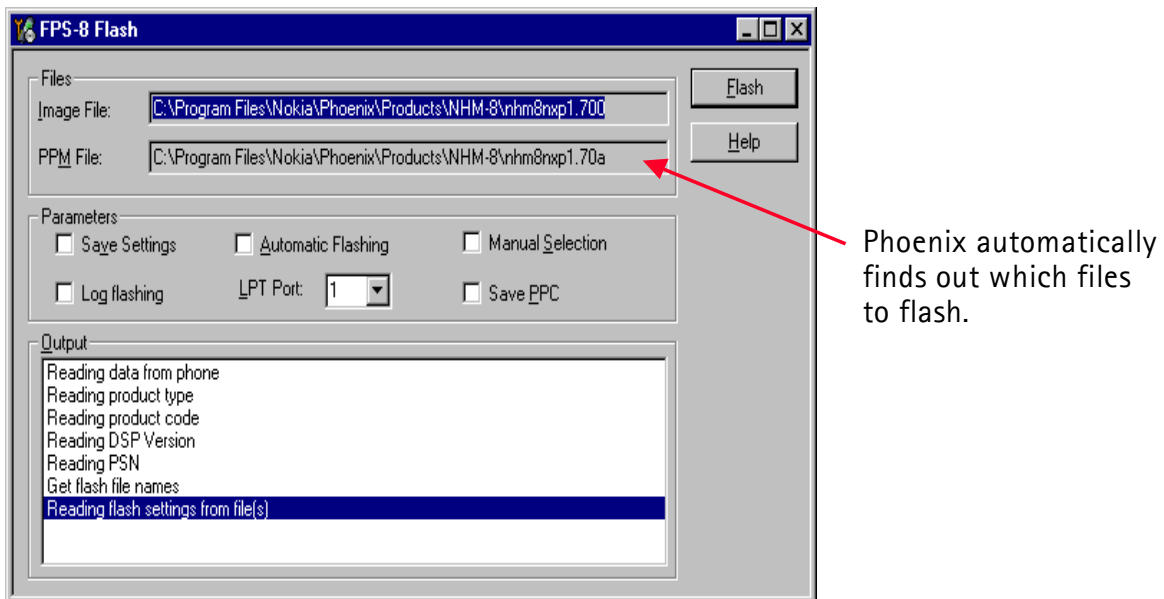
**"Reset"** button: Resets the FPS-8. **Not a common thing to do.**

If you encounter problems when updating the FPS-8, select "Log file write". This will create a log file (fps8.log) when writing files to the FPS-8. Attach this file when reporting errors.

Files can be uploaded to the FPS-8 manually by **right-clicking** on the "Flash box files" list. This will bring up this menu:



Flashing -> FPS-8 flash brings up this dialog:



**"Save settings"**: Backup/restore user settings (Phonebook, WAP settings, etc.).

**"Automatic flashing"**: Starts the flashing automatically (when a new product is scanned or the dialog is opened).

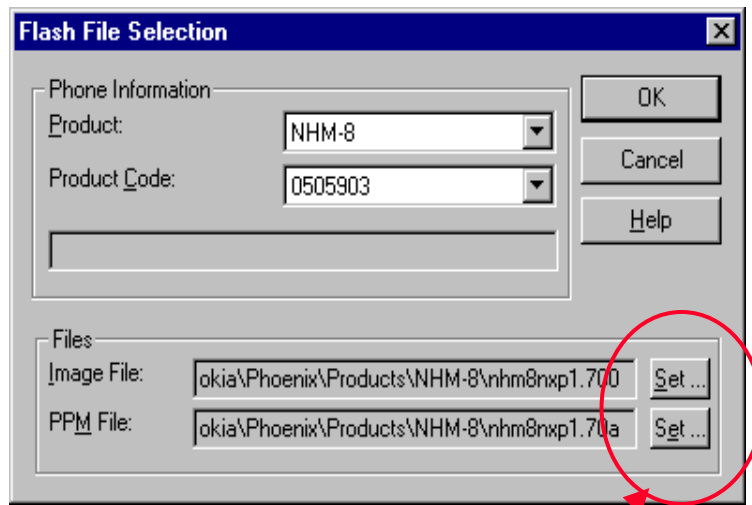
**"Manual selection"**: Select flash files manually.

**"Log flashing"**: If you encounter problems when flashing, check this. it will create a log file (fps8.log) when flashing. Attach this file when reporting errors.

**"LPT Port"**: The parallel port where the FPS-8 is connected.

"Save PPC": Saves the PPC before flashing.

### Manual flashing



Select files to flash

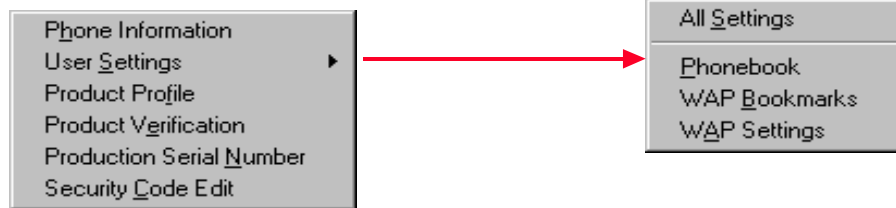
### Menus

For your information, the menus in Phoenix:

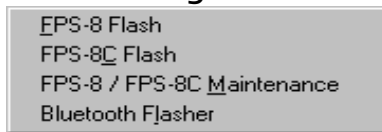
#### File menu:



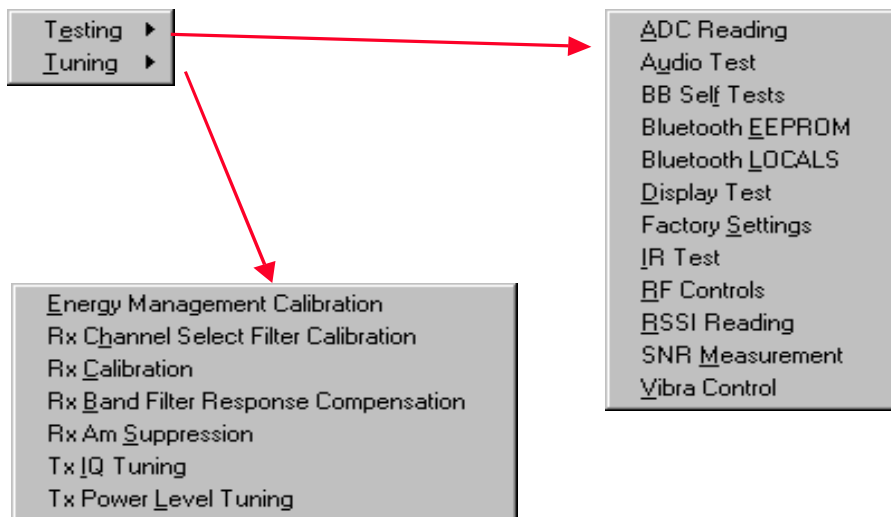
### Product menu:



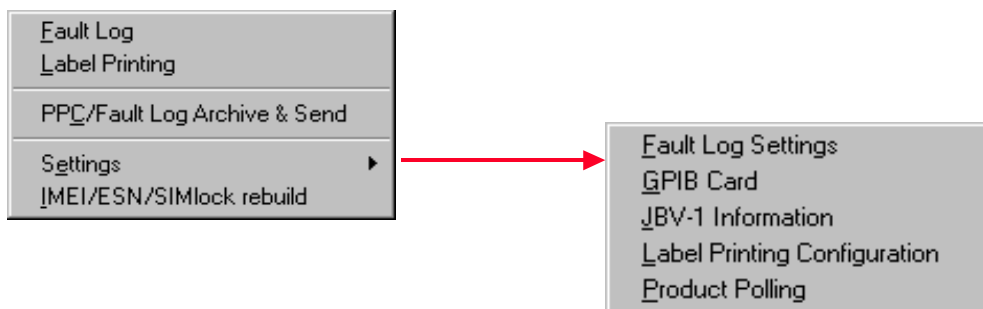
### Flashing menu:



### Maintenance menu:



### Tools menu:



### Menus left out

"Edit", "Window" and "Help". These are as standard Windows.